



SWE700F LARGE-EXCAVATOR

◆ Total weight: 66.7t

◆ Engine power: 300kW/1800rpm

◆ Bucket capacity: 3.2m³



◆ Efficient configuration

Cummins QSM11 engine with high power and reliable performance is used.
High-efficiency and energy-saving hydraulic system configuration; matching technology with independent intellectual property rights.

◆ Breaking upgrading

Professional crushing circuit system is used for more reliable crushing operation; and larger crushing hammer could be installed.
Reinforced crushing support is used, which is stable and reliable.

◆ Reliable and durable

Heavy-duty 6.4m moving arm + heavy-duty 2.9m bucket bar with good reliability; and new "hyperbolic" wear-resistant bucket with significantly reduced.

◆ digging resistance.

Large-size heavy-duty four wheels and one belt, and a full chain guard chain track mechanism are used for tough mining operations.
Double rotary motor is used to reduce start-up braking impact, improve force, and make rotation more stable.

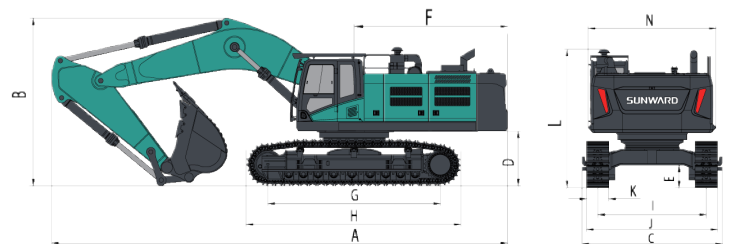
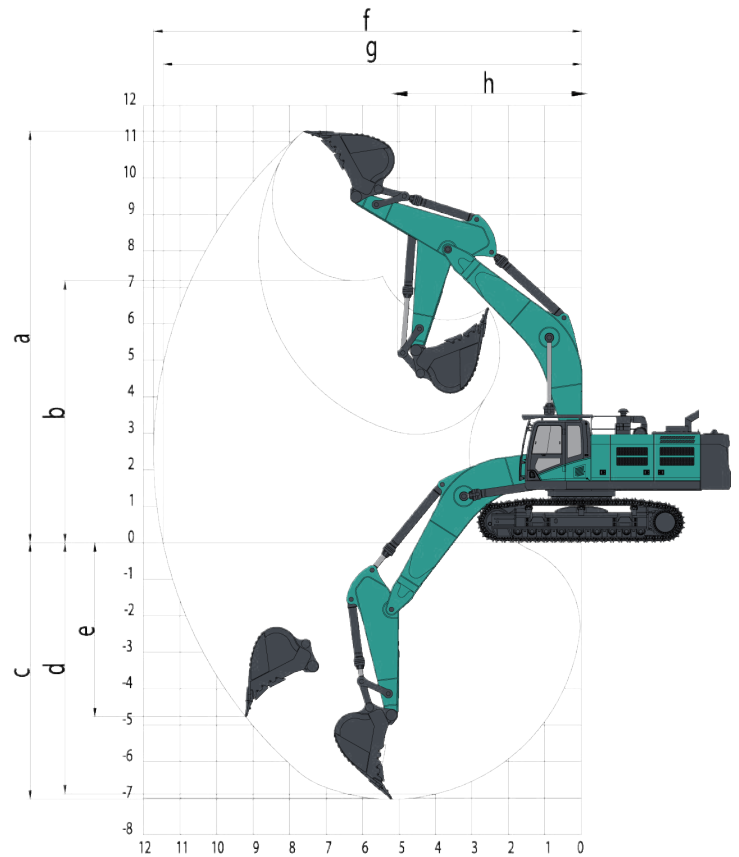


Performance parameters

Specification		
working weight	kg	66700
Standard bucket capacity	m ³	4.5
Performance		
Bucket Digging Force	kN	364
Arm Digging Force	kN	290
Max. Traction	kN	564
Max climbing angle	%	70
Ground Pressure	kPa	100.4
Travel Speed(Max/Min)	km/h	4.7/3.2
Swing speed	rpm	8.1
Oil tank capacity		
Fuel Tank	L	850
Hydraulic Oil Tank	L	590
Engine		
Brand		Cummins
Model		QSM15
Power	kw/rpm	563/2100
Max torque	N.m/rpm	3000/1400
Displacement	L	14.5

Working range

	Boom length	mm	6600
	Arm length	mm	2900
a	Max. Digging Height	mm	11290
b	Max. Dumping Height	mm	7190
c	Max. Digging Depth	mm	7030
d	Digging Depth(2.44 meter)	mm	6885
e	Max. Vertical Wall Digging Depth	mm	4770
f	Max. Digging Reach	mm	11725
g	Max. Reach at Ground Level	mm	11465
h	Min swing radius in the front	mm	5040



Outline dimension

A	Total length	mm	12165	H	Track Length	mm	5725
B	Total height	mm	4580	I	Track gauge	mm	2900
C	Total width	mm	3740	J	Track width	mm	3500
D	Counterweight Clearance	mm	1450	K	Shoe Width	mm	600
E	Chasis ground clearance	mm	600	L	Max height of total machine	mm	3675
F	Tail swing radius	mm	4095	N	Swing width	mm	3415
G	Track length on the ground	mm	4600				

